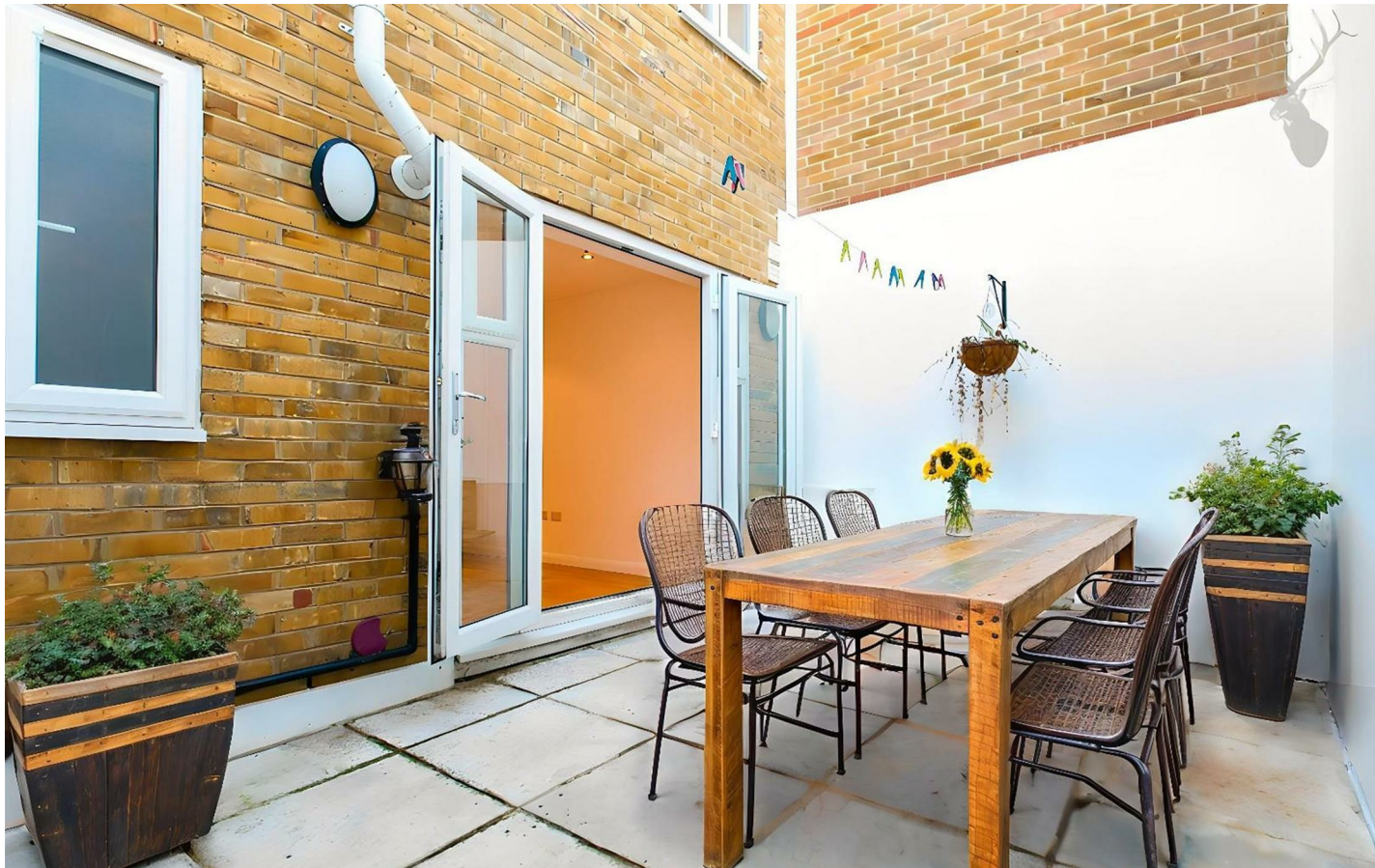




Roman Road, London, E3

BUTLER & STAG



Set in the heart of East London's vibrant Roman Road Market, this beautifully presented three bedroom, 1141 Sq/Ft duplex garden maisonette offering a rare blend of space, convenience, and location.



Leasehold

- Duplex Garden Maisonette
- Two Bathrooms
- Private Garden
- Chain Free
- Three Double Bedrooms
- 1141 Sq/Ft Internal Living Space
- Separate Kitchen
- Historical Roman Road Market On Your Door Step

Spanning two levels, the home features three well-proportioned bedrooms, a bright and airy living and dining area that opens directly onto a private courtyard — perfect for entertaining or relaxing in peace. Completing the property is a stylish fully fitted kitchen.

Tastefully finished with a mix of contemporary touches and neutral tones, this maisonette benefits from an abundance of natural light, smart storage solutions.

Located on one of London's most storied streets, you'll enjoy immediate access to bustling market stalls, artisan coffee shops, local eateries, and independent boutiques, all just moments from your doorstep. With excellent transport links nearby (including Mile End and Bow Road stations), you're perfectly positioned for both work and play.

Whether you're a growing family, a professional couple, or an investor seeking prime East London, this property offers both comfort and character in an unbeatable location.

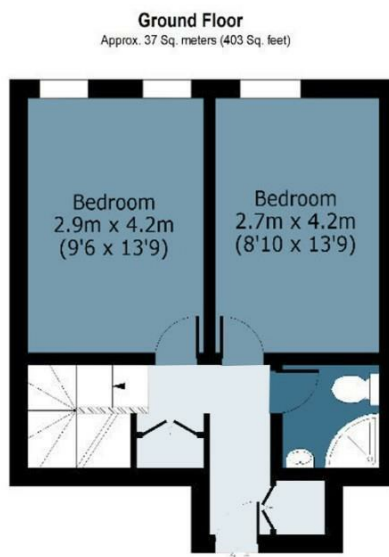
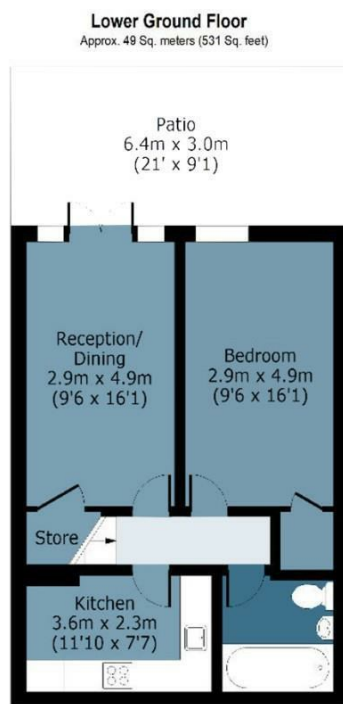




Roman Road

Approx. Gross Internal Area 106 Sq M (1141 Sq Ft)

BUTLER & STAG



Measurements are approximate and for illustration purposes only. While we do not doubt the accuracy and completeness, we advise you conduct a careful independent assessment of the property to determine monetary value.
© @modephoto.uk www.modephoto.co.uk

IMPORTANT NOTICE - These particulars have been prepared in good faith and they are not intended to constitute part of an offer or contract. We have not performed a structural survey on this property and the services, appliances and specific fittings have not been tested. All photographs, measurements, floor plans and distances referred to are given as a guide and should not be relied upon.

BUTLER & STAG

☎ 020 8102 1236

🏠 508 Roman Road, Bow, London, E3 5LU

✉ bow@butlerandstag.com

www.butlerandstag.uk